



37 Aldon Close, Maidstone

Maidstone

£395,000

**Louis
& Co**



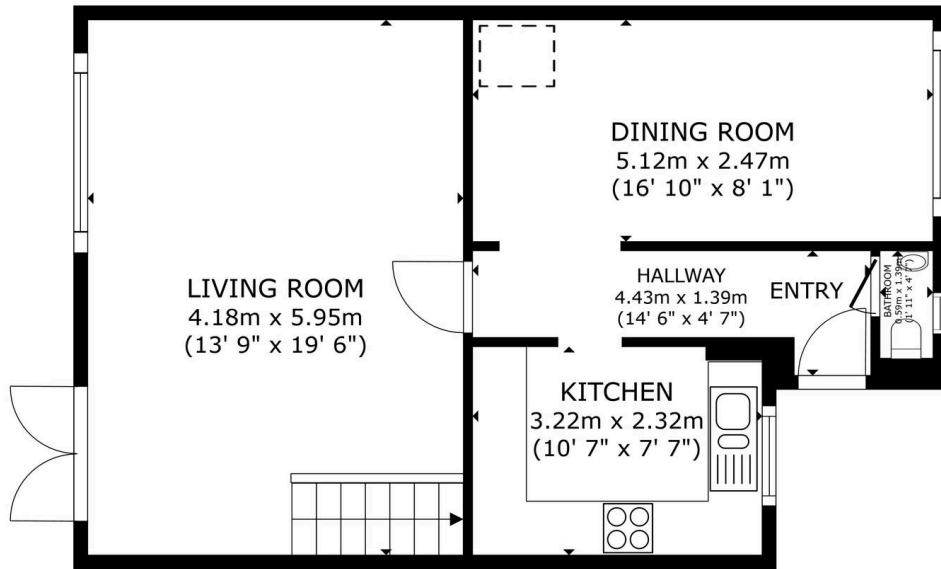
37 Aldon Close

Maidstone, Maidstone

Beautifully presented 3 bedroom home in Vinters Park comprising lounge, fitted kitchen, dining room, hallway, guest wc, three bedrooms and bathroom with shower over bath. Driveway parking, rear garden
Council Tax band: D

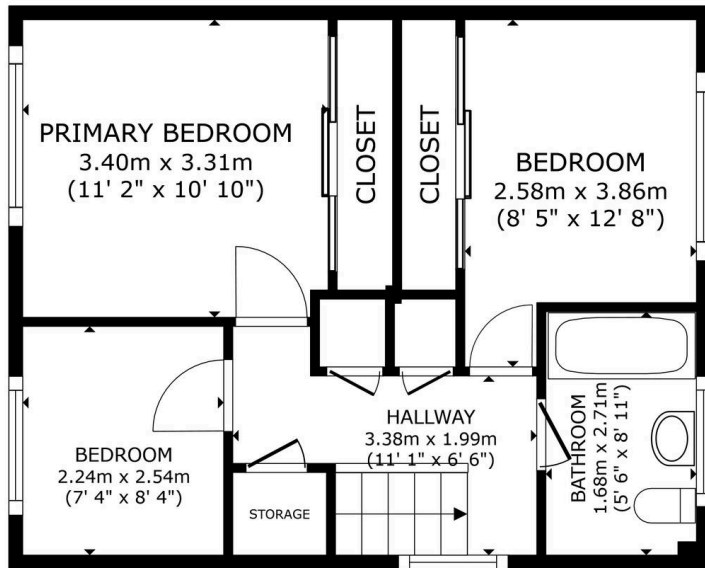
Tenure: Freehold

- quiet cul-de-sac location in popular Vinters Park
- spacious lounge and separate dining room
- fitted kitchen
- built-in wardrobes in 2 bedrooms
- guest wc
- enclosed mature garden to rear and side
- driveway parking
- northern side of Maidstone with easy M20 access



FLOOR 1

GROSS INTERNAL AREA
FLOOR 1 52.2 m² (562 sq.ft.) FLOOR 2 44.6 m² (480 sq.ft.)
TOTAL : 96.8 m² (1,042 sq.ft.)
SIZES AND DIMENSIONS ARE APPROXIMATE, ACTUAL MAY VARY.



FLOOR 2

GROSS INTERNAL AREA
FLOOR 1 52.2 m² (562 sq.ft.) FLOOR 2 44.6 m² (480 sq.ft.)
TOTAL : 96.8 m² (1,042 sq.ft.)
SIZES AND DIMENSIONS ARE APPROXIMATE, ACTUAL MAY VARY.

