



20 Somerset Road, Maidstone  
Maidstone

£500,000

Louis  
& Co





## 20 Somerset Road

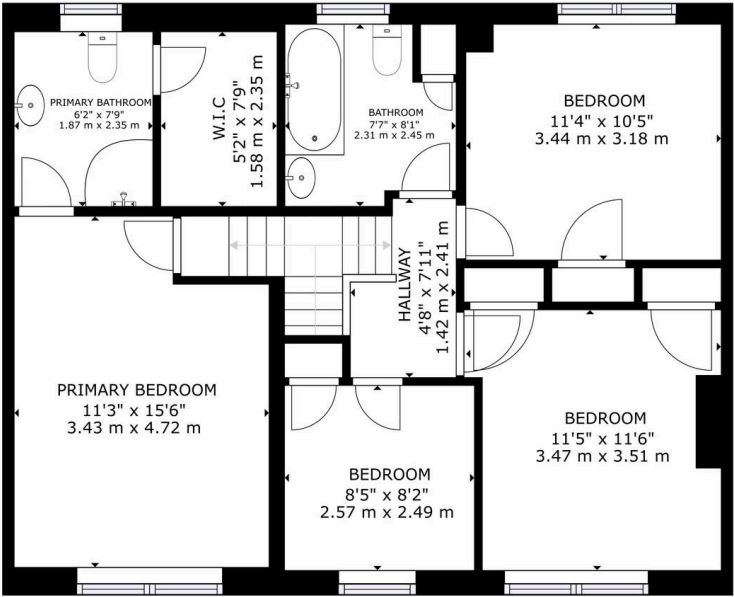
Maidstone, Maidstone

Double-fronted family home with 2 reception rooms, kitchen/dining room, 4 double bedrooms - 1 with ensuite shower room and walk-in wardrobe; family bathroom. Generous rear garden and off-road parking  
Council Tax band: C

Tenure: Freehold

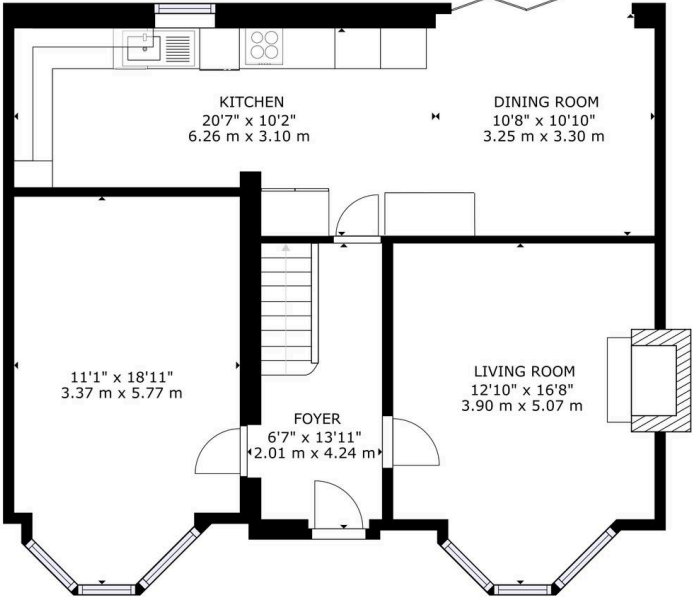
- Double fronted 4 bedroom family home
- Spacious kitchen/dining room with fold-back patio doors
- Four double bedrooms
- Main bedroom with ensuite shower room and walk-in wardrobe
- Generous rear garden and front garden providing off-road parking
- Solar panels installed on the roof - EPC B rating





FLOOR 2

GROSS INTERNAL AREA  
FLOOR 1: 907 sq ft, 75 m<sup>2</sup>; FLOOR 2: 784 sq ft, 72.83 m<sup>2</sup>  
TOTAL: 1691 sq ft, 147.83 m<sup>2</sup>  
SIZES AND DIMENSIONS ARE APPROXIMATE, ACTUAL MAY VARY



FLOOR 1

GROSS INTERNAL AREA  
FLOOR 1: 907 sq ft, 75 m<sup>2</sup>; FLOOR 2: 784 sq ft, 72.83 m<sup>2</sup>  
TOTAL: 1691 sq ft, 147.83 m<sup>2</sup>  
SIZES AND DIMENSIONS ARE APPROXIMATE, ACTUAL MAY VARY