



148 Tonbridge Road, Maidstone
Maidstone

Offers Over **£600,000**

**Louis
& Co**



148 Tonbridge Road

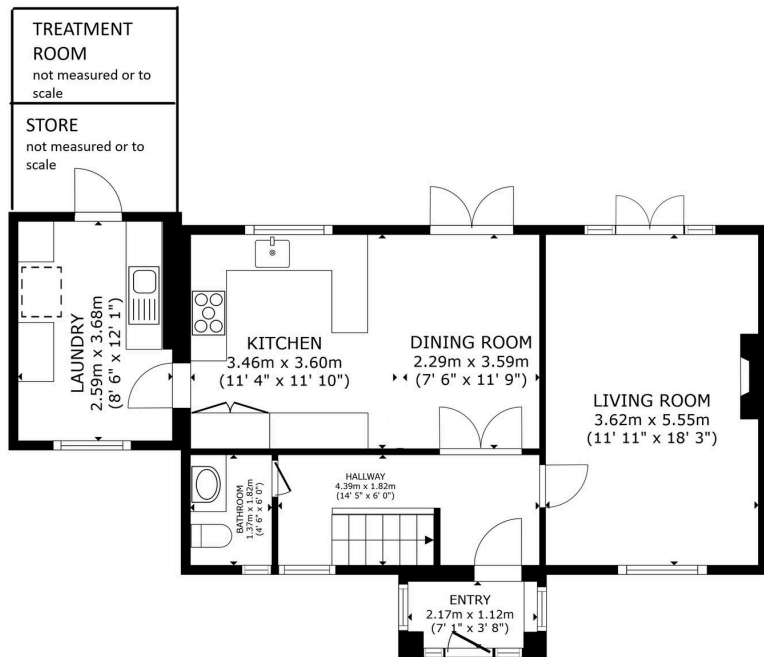
Maidstone, Maidstone

Set back from and in an elevated position on the Tonbridge Road with vehicular access from Ashdown close to the rear, this is a beautifully presented four bedroom detached family home.

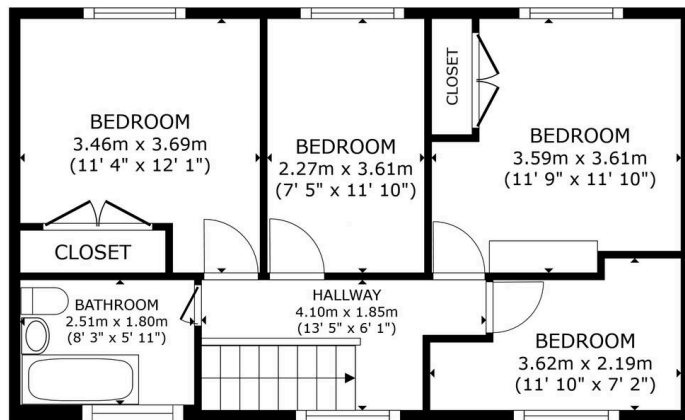
Council Tax band: F

Tenure: Freehold

- Beautifully presented 4 bedroom detached family home
- elevated position set back from the Tonbridge Road with vehicular access from rear
- gated rear garden with off road parking for 2 cars
- spacious kitchen/dining room
- utility room and guest cloakroom
- garage converted to treatment room and store



FLOOR 1



FLOOR 2



GROSS INTERNAL AREA
FLOOR 1 66.3 m² (714 sq.ft.) FLOOR 2 53.4 m² (575 sq.ft.)
TOTAL : 119.8 m² (1,289 sq.ft.)
SIZES AND DIMENSIONS ARE APPROXIMATE, ACTUAL MAY VARY.